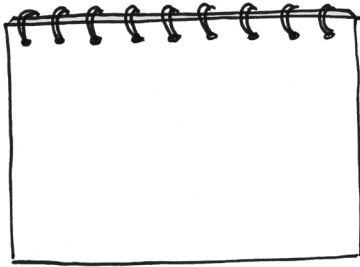


Origami natterjack toad

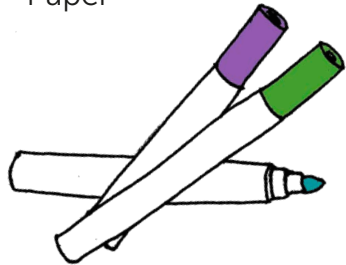
#DuneArtChallenge

Join the challenge, share your artwork with us, and learn more about sand dunes!

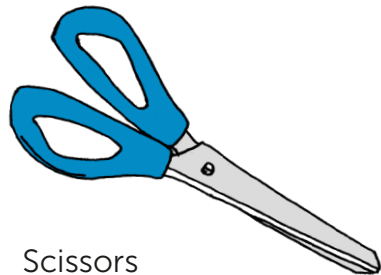
You will need:



Paper

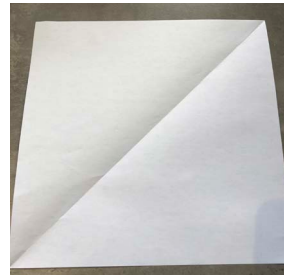


Colouring pens / pencils



Scissors

Step-by-step guide:



1 Start with a square sheet of paper. Fold it diagonally, then unfold



2 Fold the paper in half vertically. Unfold and rotate it



3 Fold the paper in half vertically again



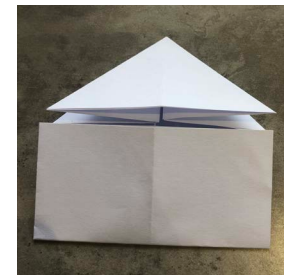
4 Fold the top right corner to the line, make a crease and unfold



4 Fold the top left corner to the line, make a crease and unfold



6 Fold the paper down along existing creases, pushing the sides in with your fingers



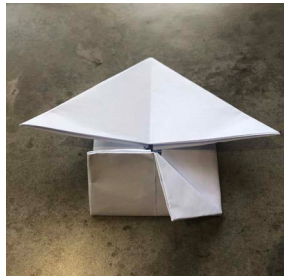
7 Push everything flat and fold the bottom part of the paper up to the triangle



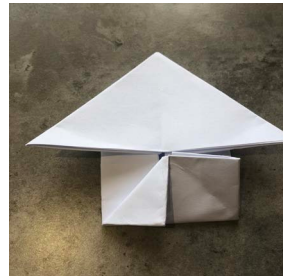
8 Fold the bottom right into the centre and tuck it behind the triangle. Repeat for the left side



9 Fold the bottom part of the paper up



10 Fold the right corner down, make a crease, then unfold



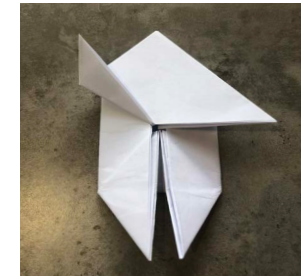
11 Fold the left corner down, make a crease, then unfold



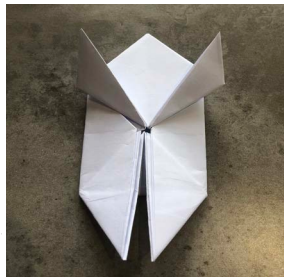
12 Pull the two flaps of paper on the inside, outwards



13 Fold the two flaps on each side downwards, to make the back legs



14 Fold the top left of the paper up, to make one of the front legs



15 Fold the top right of the paper up, to make the other front leg



16 Fold the bottom left of the paper up, to finish the back leg



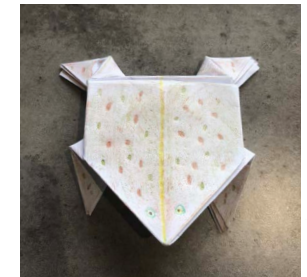
17 Fold the bottom right of the paper up, to finish the other back leg



18 Fold the back legs up, making a crease between the front and back legs



19 Fold the top part of the back legs down, then turn the toad over. Press on its back to make your toad jump!



20 Now decorate! Natterjack toads are olive green and have a distinctive yellow stripe down their back

dynamicdunescapes.co.uk | [@dynamicdunes](https://twitter.com/dynamicdunes)

Dynamic Dunescapes is a partnership project restoring sand dunes across England and Wales for the benefit of wildlife, people and communities. Project partners are Natural England, Plantlife, National Trust, Natural Resources Wales and the Wildlife Trusts, and the project is supported by the National Lottery Heritage Fund and the EU LIFE Programme.

